



CForBio: a network monitoring Chinese forest biodiversity

Gang Feng · Xiangcheng Mi · Hui Yan ·
Frank Yonghong Li · Jens-Christian Svenning ·
Keping Ma

Received: 25 March 2016/Revised: 29 April 2016/Accepted: 13 May 2016/Published online: 6 July 2016
© Science China Press and Springer-Verlag Berlin Heidelberg 2016

Abstract China harbors a rich variety of forest types and forest-associated biodiversity, linked to both historical and contemporary environmental factors. However, being a country with a large population and rapid economic development, its diverse forest is facing unprecedented challenges. The Chinese Forest Biodiversity Network (CForBio) was initiated 12 years ago to study the maintenance of biodiversity in China's forest ecosystems. In this review, we first summarize research progress in CForBio, and then give suggestions for future research. In the past 12 years, the research based on CForBio mainly focused on local ecological factors, such as environment filtering, biotic interactions and small-scale dispersal limitation. We suggest that future studies in CForBio should (1) continue research on trees, but expand more on insects, birds, mammals, microbes and other organism groups; (2) investigate the effects of widespread defaunation on forest biodiversity, structure and functioning; (3) evaluate the diverse effects of climate change on forest composition,

structure and functioning; (4) include new technologies, such as remote sensing, to better monitor and study forest biodiversity change and maintenance.

Keywords Forest ecosystem · Defaunation · Climate change · Remote sensing

1 Introduction

Forests play important roles in maintaining biodiversity and for the functioning of the biosphere [1, 2]. The majority of species described on Earth live in forests [1]. A recent study estimates that tropical forests may harbor about 40,000–53,000 tree species, most of which are extremely rare, indicating a high risk of extinction of these species [3]. Forests also account for a large proportion of gross primary production, plant biomass and carbon [4, 5].

Forests in China are especially unique in terms of the unbroken connections between tropical, subtropical, temperate and boreal forest [6, 7]. Although temperate forests in China, Europe and North America have similar species composition and community structure, China's temperate forests generally have higher taxonomic diversity and contain more unique paleoendemics than the other two regions [6, 8, 9]. Notably, all 10 biodiversity hotspots in China for both plants and animals, as well as the endemic and threatened component of them, are located in mountainous areas [10].

However, forests are now among the ecosystems that have been most severely affected by habitat destruction [7, 11]. Although overall area covered with forest is increasing in China, natural old-growth forests are still declining [12, 13]. China's large and still increasing human population as well as its rapid economic development is likely to have even

G. Feng (✉) · F. Y. Li
Department of Ecology, College of Life Sciences, Inner
Mongolia University, Hohhot 010021, China
e-mail: qaufenggang@163.com

G. Feng · J.-C. Svenning
Section for Ecoinformatics and Biodiversity, Department of
Bioscience, Aarhus University, Ny Munkegade 114,
8000 Aarhus C, Denmark

X. Mi · K. Ma
State Key Laboratory of Vegetation and Environmental Change,
Institute of Botany, Chinese Academy of Sciences,
Beijing 100093, China

H. Yan
Monitoring and Planning Institution of Inner Mongolia Forestry
Administration, Hohhot 010021, China

stronger impacts on its forest biodiversity in the future decades. Therefore, China's forests are of critical importance for its biodiversity research and conservation in the future.

Chinese Forest Biodiversity Monitoring Network (CForBio, <http://www.cfbiodiv.org>), initiated in 2004, is aimed at monitoring the long-term biodiversity changes and investigating the mechanisms maintaining biodiversity, such as community assembly and species coexistence rules in China's forests. By 2014, this network included 13 large permanent forest plots, distributed across a latitudinal gradient, ranging from tropical forest in Xishuangbanna, Yunnan province, to a boreal coniferous forest at Daxinganling, Heilongjiang province, as shown in Fig. 1 [14]. Hundreds of papers on mechanisms underlying biodiversity patterns and forest community structure have been published from this network [14]. In this paper we will first summarize the progress made by CForBio, and then provide some suggestions for future research.

2 Research progresses made by CForBio

The assembly of biotic communities is shaped by both local factors, such as abiotic filtering, biotic interactions,

anthropogenic impacts and local dispersal, as well as regional and historical factors, such as speciation, extinction, broad-scale migration and historical climate [15, 16]. We will introduce what has been learnt from CForBio on the roles of these factors in shaping the assembly of Chinese forest tree assemblages.

2.1 Local factors

Since the beginning of the era of community ecology in the 1950s, local interactions between species and environment or interactions among species have dominated in both theoretical and empirical studies of community ecology [17]. These interactions have also been a central topic in CForBio.

2.1.1 Habitat filtering

Habitat filtering has been widely reported to strongly shape species composition, functional and phylogenetic structure, producing a local clustered assembly of species with similar functional traits or close phylogenetic relations [18–21].

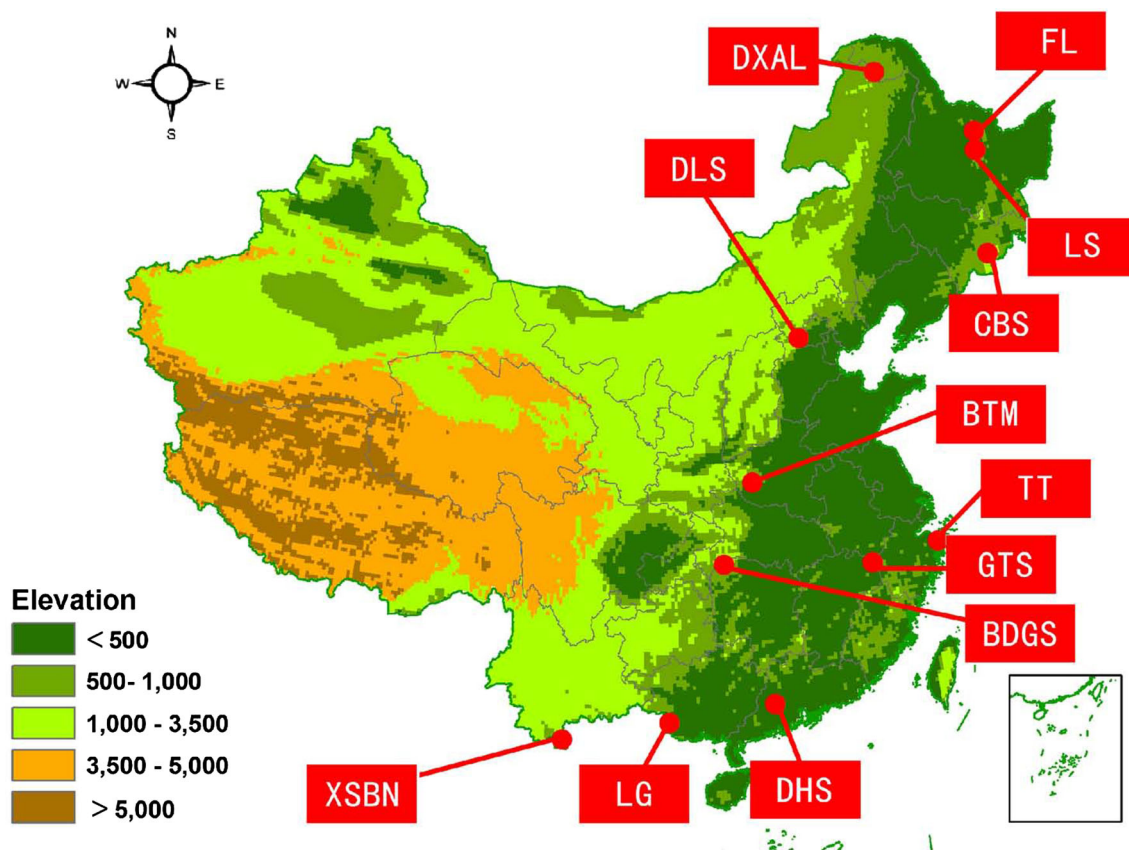


Fig. 1 Distribution of 13 large permanent forest plots across China. These plots are Daxing'anling (DXAL), Fenglin (FL), Liangshui (LS, two plots), Changbaishan (CBS), Donglingshan (DLS), Baotianman (BTM), Tiantong (TT), Gutianshan (GTS), Badagongshan (BDGS), Dinghushan (DHS), Longgang (LG), and Xishuangbanna (XSBN)

2.1.1.1 Topography Being an easily quantified synthetic proxy for many environmental resources such as soil moisture and nutrients as well as biotic conditions [22], the relations of topography to species diversity, composition and other aspects of community structure have been extensively studied [20, 21]. In Dinghushan (DHS) subtropical forest, the genetic structure of a dominant tree species (*Castanopsis chinensis*) is highly associated with the complex topography [23]. Strong species-topographic habitat associations are found in Gutianshan (GTS) subtropical forest [18]. Importantly, these associations may change across life stages, e.g., the associations can be consistent for saplings and juveniles, but change at mature stage [18]. Similar associations between dominant tree species and topography are also reported in Xishuangbanna (XSBN) tropical forest [24]. In addition, in the same forest, not only species diversity and composition, but also species traits show significant association with topography, i.e., higher elevations and steeper slopes having more species with slow growth and low turnover [21]. Lastly, community phylogenetic structure is also closely linked with topographic variables in DHS, with phylogenetic clustering in valley and low slope habitats, and phylogenetic overdispersion in high slope, ridge-top, and high gully habitats [20]. To sum up, topography has significantly affected the genetic structure, species composition, functional and phylogenetic structure of Chinese forest tree communities.

2.1.1.2 Soil Soil properties may affect species richness and composition by both direct and resource-related effects [25]. Strong association between spatial heterogeneity of soil properties and tree species distribution is reported in GTS subtropical forest even after controlling the effect of dispersal limitation [19]. In the other subtropical forest (DHS), species distribution is found to be better explained by soil variables than topography [26]. Leaf area and wood density are also predicted to be correlated with soil fertility at both species- and quadrat-level in GTS [27]. Both tree species composition and tree survival in the Changbaishan (CBS) temperate forest are found to be more controlled by soil variables than topography [28, 29]. Spatial distribution of soil organic carbon in CBS is also mainly structured by soil properties, such as soil moisture and pH [30]. In XSBN tropical forest, soil nutrients was consistently found to be a better explanatory factor than spatial distance for both phylogenetic and functional beta diversity, indicating a stronger role of deterministic environmental processes relative to stochastic dispersal-related processes in community assembly [31]. In all, soil properties in Chinese forest play important roles in shaping the species composition, functional and phylogenetic structure of its tree assemblages.

2.1.1.3 Light Understory light is an important environmental variable for tree species regeneration in forest communities, strongly affecting community composition and structure [32]. In CBS temperate forest, available understory light is positively correlated with seedling survival of shrubs and light-demanding species [33]. In GTS subtropical forest, seed rain and seed limitation showed similar patterns between community understory and gaps, indicating a neutral role of gaps in shaping seed diversity in this forest [34]. Using the ratio of light-demanding species as an indicator of light availability (also an indicator of nature disturbance), a strong relation between functional structure and proportions of light-demanding species across 11 forest plots was shown [35]. While these studies indicate that light levels within forest affect community structure, the role of light availability in shaping forest structure in China has only been studied to a limited extent, with focus mainly on tree regeneration and functional composition.

2.1.2 Biotic interactions

In addition to relations between plants and environment, interactions among con- or heterospecific plant individuals or between plants and other organisms can also be very important in community assembly, and have also received attention in CForBio, with a focus on negative density dependence [33, 36, 37].

2.1.2.1 Negative density dependence As an important mechanism in biodiversity maintenance, negative density dependence has been widely tested in the past decades [38, 39]. In the GTS subtropical forest, negative density dependence is prevalent, even after controlling the effects of habitat heterogeneity [36]. In contrast, in the other subtropical forest not far away from GTS, only evidence of negative density dependence at early life-history stages was found [40]. While the evidence of negative density dependence, as a factor in tree community assembly, has historically been reported primarily from tropical forests, CForBio has strengthened the evidence for the role of this mechanism also in forests outside the tropics. In the CBS temperate forest, tree survival is negatively related with conspecific basal area for most species, indicating the role of negative density dependence in regulating species composition [41]. Further, in the Liangshui (LS) temperate forest, negative density dependence is prevalent across multiple life stages [37]. Hence, negative density dependence is an important factor for local tree community assembly broadly across China's forests.

2.1.2.2 Mutualism Besides the negative biotic interactions, positive relations among species should also be considered in community ecology [42, 43]. However,

studies on this topic in CForBio are very limited. In GTS subtropical forest, ectomycorrhizal (EM) fungi diversity is positively connected with host plant diversity, with genus-level plant diversity being a better predictor than species- and family-level diversity [44].

2.1.3 Local dispersal

Neutral theory of biodiversity assumes that every species is ecologically equivalent and dispersal limitation is the main force structuring community patterns [45]. Most studies in CForBio that tested this hypothesis have used spatial distance as a surrogate of dispersal limitation and found that dispersal limitation plays important roles in shaping species, functional and phylogenetic diversity patterns [31, 46, 47]. In the CBS temperate forest, Jaccard coefficients between seed rain and neighboring adult trees significantly decrease with an increasing neighborhood radius, indicating the role of dispersal limitation in this forest [48]. The few other studies on seed rain and seed limitation only provide descriptive information about the phenology, syndromes and distributions of tree species in different habitats in GTS subtropical forest [34, 49].

2.1.4 Human impacts

Forest is one of the ecosystems that have been most affected by human activities in China [7, 11]. The influence of human activities on Chinese forests has also been examined in CForBio. In DLS temperate forest, ground beetles show a higher species richness in naturally regenerated remixed forest than in other monoculture forests [50]. Different forest management histories in GTS also have strong effects on tree community phylogenetic and functional structure, with a less clustering structure in more mature forest, and thus may affect forest ecosystem functioning via diversity effects [51], i.e., in addition to effects on stand age and structure.

2.1.5 Interaction of local factors

An increasing number of studies have emphasized the necessity of considering multiple factors simultaneously to explain biodiversity patterns, notably to quantify the relative importance of biotic and abiotic processes or their interactions [46, 52].

In the GTS subtropical forest, variation in species richness (~53 %) and composition (~65 %) were jointly explained by habitat and space, and the relative roles of these two processes change with spatial scales, with neutral processes (43 % variation explained) more important than environmental control (20 %) at fine scale [46]. Seedling dynamics in this forest as well as in the CBS temperate

forest are affected by both density dependence and habitat associations [52, 53]. The spatial distribution of tree species in the DHS subtropical forest suggests that seed dispersal limitation, competition and habitat heterogeneity together affect species coexistence [54]. In the CBS temperate forest, environmental filtering is more important at broader scale, while biotic interactions are more important at finer scale, with a reduced importance of both factors at very fine scales, possibly reflecting an increased importance of non-spatial stochastic dynamics, e.g., demographic stochasticity [28]. Genetic structure of *C. chinensis* in DHS subtropical forest is linked to both topography and species life-history traits, such as pollination and dispersal, which lead to a higher genetic diversity in windward ridges [23].

2.2 Regional factors

In the last decades, evidences have accumulated for the importance of large-scale processes for local community assembly [15, 16]. In the case of China's forests, historical climate change together with contemporary climate were linked with species richness in Chinese mountain forests [55]. Regional species richness also significantly affected local species richness in Chinese forests [56]. Widely distributed glacial refuge during Quaternary in China has also left strong genetic imprints in China's diverse temperate flora [57].

However, so far most studies in CForBio have focused on local factors, with only a few addressing the role of regional processes [35, 58]. By linking phylogenetic and functional structure in Chinese forests to current and glacial climate as well as local disturbance, the glacial–interglacial shift in temperature is found to be the strongest explanatory factor for phylogenetic structure, with more overdispersed structure in areas with stable climate, supporting the niche conservatism hypothesis [35]. In contrast, local disturbance emerged as the factor having the strongest explanatory power for functional community structure, with more clustered structure in more disturbed forests [35]. Also, when expanding the species pool from East Asian to a global scale, forest communities in East Asia have lower Net Relatedness Index (mainly reflecting the basal phylogenetic structure) and higher Nearest Taxon Index (reflecting the tip phylogenetic structure), indicating the role of inter-continental migration, climatic conservatism, as well as local diversification in shaping the geographic variation in phylogenetic structure of these forests [58].

3 Perspectives

Forests harbor high levels of biodiversity at multiple trophic levels or different groups, not only woody plants.

An intact forest ecosystem includes woody plants, herbs, bacteria, fungi, insects, birds, mammals, etc. All of these components have direct or indirect connections through competition, facilitation, parasitism, predation, and so on. Factors affecting these components and connections not only include local environment and biotic interactions, but also increasingly include a range of anthropogenic global change factors, notably human-induced climate change, direct effects of increasing human populations, invasive species and defaunation.

CForBio includes 13 large permanent forest plots across eastern China along a latitudinal gradient from tropical and subtropical, through temperate, to boreal areas [14], whereas the research conducted at CForBio and has published so far has not yet linked all these plots together to address the divergence in biodiversity and forest ecosystems across these climatic zones. It would be much powerful to conduct coordinated well-designed common analyses and experiments across these plots to study and disentangle the effects of paleo- and contemporary climate, evolutionary dynamics, species invasions and human activities on the biodiversity and ecosystem services of China's forests.

3.1 Organism groups beyond woody plants

So far, most publications in CForBio only focused on diversity patterns and community structure of woody plants. However, other groups of organisms also exist and interact with each other in the diverse forest ecosystem. For instance, herb-layer diversity and biomass are important component of forest ecosystem [59, 60]. Notably, density and distribution of tree seedlings may be strongly affected by herb patches [59]. Herbaceous diversity and biomass can also be correlated with tree-layer diversity [60]. Moreover, different tree species could have distinct microbial communities, including bacteria, fungi and archaea [61]. On the other hand, microbes may also have a range of effects on plant communities, in terms of diversity, structure and productivity [62].

Furthermore, tree diversity, composition as well as tree cover could affect both underground and aboveground animal diversity [63–65]. For instance, in a Central European deciduous forest, earthworm densities are positively correlated with tree species diversity, indicating the important role of diverse food qualities for decomposer fauna [64]. Diversity and composition of tree communities could also affect herbivory diversity, providing evidence for the role of biodiversity in maintaining ecosystem functioning across different trophic levels [65]. Tree cover in agricultural landscapes could significantly affect diversity of birds, bats, butterflies and dung beetles [63].

To sum up, forest is a high diverse ecosystem composed of many different groups of organisms and these groups have very complex direct and indirect interactions, e.g. like a network [66], thus it is of crucial importance to consider these different groups and their interactions when study the mechanisms underlying forest biodiversity and functioning in CForBio.

3.2 Defaunation

Diversity of animals strongly shape species composition, structure and functioning of tree communities [67, 68]. In Congo tropical forest, seed dispersal and recruitment of trees with megafaunal syndrome are significantly affected by the number of elephant [67]. In a Spanish temperate secondary forest, all components of seed dispersal (both number and richness of dispersed seeds) are positively related with richness of frugivorous birds [68].

Defaunation, the decline or loss of large and medium native vertebrate populations, has affected the forest biome a lot, with an effect even larger than deforestation and logging combined [69, 70]. The consequence of defaunation on forest biodiversity, structure and functioning has been well documented [70, 71]. For instance, empty forest resulted from defaunation is widely distributed in China, even in its nature reserves [72, 73]. Local tree diversity is consistently declining over 15 years in a tropical forest community (a large permanent forest plot) because of overhunting [70]. Seed size in palm populations in Brazilian Atlantic forest is smaller in areas without their large avian frugivores than in non-defaunated regions [74]. Carbon storage is significantly influenced by defaunaion of large frugivores in 31 Atlantic forest communities [71]. However, so far, no studies in CForBio has investigated effects of defaunation on the composition, structure and functioning of Chinese forests.

3.3 Climate change

One of the important ecosystem service provided by forest is its influence on climate through biological, physical and chemical processes. However, most studies in the past decades have focused on the opposite influence, i.e., the influence of climate change on forest ecosystems [2]. One of the reasons why China has more diverse forest types and composition than North America and Europe is that China has been relatively less affected by the glacial–interglacial climate change [7]. Nevertheless, in the past century and in the future, climate change has and will significantly influence the composition, structure, distribution and functioning of Chinese forests [75].

For instance, regional-scale drying in the past 34 years is probably responsible for the reorganization of China's

tropical and subtropical forest, e.g., increasing numbers of individuals and species for shrubs and small trees but decreasing numbers of individuals and species of trees [76]. Studies based on permanent plots in American and African tropical forest also show that increased drought strongly affected the species richness, functional composition as well as ecosystem functioning [77, 78].

A dominant effect of climate warming on temperate forest in north-eastern China is evident only in high and low elevations areas, not in areas with mid-elevation, suggesting that the southern and northern edges of forest ecosystem are more vulnerable to climate change [79]. In addition to these leading edge and trailing edge changes, climate change effect on species range shifts should also consider the optimum position or the abundance changes [80]. Moreover, globally speaking, research efforts on climate-related range shifts in China are relatively weak, especially in the subtropical and tropical biomes [80]. Therefore, the CForBio network provides an important chance to improve the geographic shortfalls of climate-related range shifts research.

Except for these direct effects, climate change could also indirectly affect forest composition and structure by influencing the distribution and abundance of forest insects, pathogens and fire [81–83]. In a boreal forest in Northeast China, spatial distribution of fire occurrences is strongly affected by climatic change and human influence [81]. Actually, forest fire is one of the major drivers of forest dynamics in the circumpolar boreal region [82]. In contrast, biotic disturbances by insects and diseases are strongly influencing forest composition and structure at a global scale [83, 84].

One of the main purposes of CForBio is to monitor the long-term change of forest biodiversity and structure. However, so far few CForBio studies have investigated the effects of contemporary climate change. Moreover, because the ecosystems in western and northern China are more sensitive to climate change than ecosystems in East China [75], and the current distribution of forest plots in CForBio concentrated in East China [14], it is very important to have more long-term monitored large forest plots in these regions, especially the western part, to better understand the effect of climate change on Chinese forests.

3.4 Remote sensing

The area of forest on the Earth is four billion hectares, about 30 % of its total land area [85]. Thus, to better understand the change of forest composition and structure at various spatial scales, it is impossible to only rely on forest inventory. Based on Earth observation satellite data, forest cover changes between 2000 and 2012 were

analyzed globally at a spatial resolution of 30 meters [86]. Spatially implicit information from aerial images (7 cm pixel⁻¹) of canopy gaps produced by unmanned aerial vehicles could assess plant diversity of forest understory very well ($R^2 = 0.74$) [87]. Also using unmanned aerial vehicles, remote sensing based canopy height, above-ground biomass, percent canopy openness, as well as predicted frugivore presence and abundance were strongly correlated with field-based measures [88].

At this point, CForBio already has 13 large permanent forest plots, but this is still not enough to represent all forested areas in China. To better understand and conserve forest biodiversity, combine remote sensing with plots investigation is quite useful and necessary.

4 Conclusion

The CForBio is an important network for monitoring and investigating biodiversity patterns and dynamics as well as the underlying mechanisms in China, a fast developing country with large population and rich biodiversity. This synthesis of the research conducted in CForBio shows that strong progress in understanding the patterns of biodiversity and community structures and the drivers for their changes in the forests of different climatic zones has been achieved. More efforts should be put, first, to conduct coordinated and well-designed common experiments in different forest ecosystems along the latitudinal gradient, so as to reveal the effects of large-scale drivers as historical and contemporary climate on the biodiversity and ecology of the forests in China; second, the CForBio should extend its research from forest plant communities to forest ecosystems, that is, to study the organisms in forest and their interactions and relations with environment for a better understanding of the drivers and processes responsible for forest dynamics and community assemblage and biodiversity loss.

Acknowledgments We thank the Chinese Scholarship Council (201204910187) for the support to GF. GF was also funded by the Starting Funding for Scientific Research from Inner Mongolia University. JCS was funded by the European Research Council (ERC-2012-StG-310886-HISTFUNC) and the Danish Council for Independent Research | Natural Sciences (12-125079).

Conflict of interest The authors declare that they have no conflict of interest.

References

- Pan YD, Birdsey RA, Phillips OL et al (2013) The structure, distribution, and biomass of the world's forests. *Annu Rev Ecol Evol Syst* 44:593–622

2. Anderson-Teixeira KJ, Davies SJ, Bennett AC et al (2015) CTF-
ForestGEO: a worldwide network monitoring forests in an era of
global change. *Glob Change Biol* 21:528–549
3. Slik JWF, Arroyo-Rodríguez V, Aiba SI et al (2015) An estimate
of the number of tropical tree species. *Proc Natl Acad Sci USA*
112:7472–7477
4. Beer C, Reichstein M, Tomelleri E et al (2010) Terrestrial gross
carbon dioxide uptake: global distribution and covariation with
climate. *Science* 329:834–838
5. Pan YD, Birdsey RA, Fang JY et al (2011) A large and persistent
carbon sink in the world's forests. *Science* 333:988–993
6. Latham RE, Ricklefs RE (1993) Global patterns of tree species
richness in moist forests: energy-diversity theory does not
account for variation in species richness. *Oikos* 67:325–333
7. López-Pujol J, Zhang FM, Ge S (2006) Plant biodiversity in
China: richly varied, endangered, and in need of conservation.
Biodivers Conserv 15:3983–4026
8. Fang JY, Wang XP, Liu YN et al (2012) Multi-scale patterns of
forest structure and species composition in relation to climate in
northeast China. *Ecography* 35:1072–1082
9. Manchester SR, Chen ZD, Lu AM et al (2009) Eastern Asian
endemic seed plant genera and their paleogeographic history
throughout the northern hemisphere. *J Syst Evol* 47:1–42
10. Tang ZY, Wang ZH, Zheng CY et al (2006) Biodiversity in
China's mountains. *Front Ecol Environ* 4:347–352
11. Dinerstein E, Wikramanayake ED (1993) Beyond “hotspots”:
how to prioritize investments to conserve biodiversity in the Indo-
Pacific region. *Conserv Biol* 7:53–65
12. Zhang YX, Song CH (2006) Impacts of afforestation, deforesta-
tion, and reforestation on forest cover in China from 1949 to
2003. *J Forest* 104:383–387
13. Xu JC (2011) China's new forests aren't as green as they seem.
Nature 477:371
14. Ma KP (2015) Biodiversity monitoring in China: from CForBio
to Sino BON. *Biodivers Sci* 23:1–2 (In Chinese)
15. Ricklefs RE (1987) Community diversity: relative roles of local
and regional processes. *Science* 235:167–171
16. Whittaker RJ, Willis KJ, Field R (2001) Scale and species rich-
ness: towards a general, hierarchical theory of species diversity.
J Biogeogr 28:453–470
17. Vellend M (2010) Conceptual synthesis in community ecology.
Q Rev Biol 85:183–206
18. Lai JS, Mi XC, Ren HB et al (2009) Species-habitat associations
change in a subtropical forest of China. *J Veg Sci* 20:415–423
19. Zhang LW, Mi XC, Shao HB et al (2011) Strong plant–soil
associations in a heterogeneous subtropical broad-leaved forest.
Plant Soil 347:211–220
20. Pei NC, Lian JY, Erickson DL et al (2011) Exploring tree-habitat
associations in a Chinese subtropical forest plot using a molecular
phylogeny generated from DNA barcode loci. *PLoS One*
6:e21273
21. Liu JJ, Yunhong T, Slik JWF (2014) Topography related habitat
associations of tree species traits, composition and diversity in a
Chinese tropical forest. *Forest Ecol Manag* 330:75–81
22. Moeslund JE, Arge L, Bøcher PK et al (2013) Topography as a
driver of local terrestrial vascular plant diversity patterns. *Nord J*
Bot 31:129–144
23. Wang ZF, Lian JY, Ye WH et al (2014) The spatial genetic
pattern of *Castanopsis chinensis* in a large forest plot with
complex topography. *Forest Ecol Manag* 318:318–325
24. Lan GY, Hu YH, Cao M et al (2011) Topography related spatial
distribution of dominant tree species in a tropical seasonal rain
forest in China. *Forest Ecol Manag* 262:1507–1513
25. Austin MP (2002) Spatial prediction of species distribution: an
interface between ecological theory and statistical modelling.
Ecol Model 157:101–118
26. Lin G, Stralberg D, Gong G et al (2013) Separating the effects of
environment and space on tree species distribution: from popu-
lation to community. *PLoS One* 8:e56171
27. Liu XJ, Swenson NG, Wright SJ et al (2012) Covariation in plant
functional traits and soil fertility within two species-rich forests.
PLoS One 7:e34767
28. Yuan ZQ, Gazol A, Wang XG et al (2011) Scale specific deter-
minants of tree diversity in an old growth temperate forest in
China. *Basic Appl Ecol* 12:488–495
29. Wang X, Comita LS, Hao Z et al (2012) Local-scale drivers of
tree survival in a temperate forest. *PLoS One* 7:e29469
30. Yuan ZQ, Gazol A, Lin F et al (2013) Soil organic carbon in an
old-growth temperate forest: spatial pattern, determinants and
bias in its quantification. *Geoderma* 195:48–55
31. Yang J, Swenson NG, Zhang GC et al (2015) Local-scale parti-
tioning of functional and phylogenetic beta diversity in a tropical
tree assemblage. *Sci Rep* 5:12731
32. Rüger N, Huth A, Hubbell SP et al (2009) Response of recruit-
ment to light availability across a tropical lowland rain forest
community. *J Ecol* 97:1360–1368
33. Lin F, Comita LS, Wang XG et al (2014) The contribution of
understory light availability and biotic neighborhood to seedling
survival in secondary versus old-growth temperate forest. *Plant*
Ecol 215:795–807
34. Du YJ, Mi XC, Ma KP (2012) Comparison of seed rain and seed
limitation between community understory and gaps in a sub-
tropical evergreen forest. *Acta Oecol* 44:11–19
35. Feng G, Mi XC, Bøcher PK et al (2014) Relative roles of local
disturbance, current climate and paleoclimate in determining
phylogenetic and functional diversity in Chinese forests. *Bio-
geosciences* 11:1361–1370
36. Zhu Y, Mi XC, Ren HB et al (2010) Density dependence is
prevalent in a heterogeneous subtropical forest. *Oikos*
119:109–119
37. Piao TF, Comita LS, Jin GZ et al (2013) Density dependence
across multiple life stages in a temperate old-growth forest of
northeast China. *Oecologia* 172:207–217
38. Janzen DH (1970) Herbivores and the number of tree species in
tropical forests. *Am Nat* 104:501–528
39. Connell JH (1971) On the role of natural enemies in preventing
competitive exclusion in some marine animals and in rain forest
trees. In: Den BPI, Gradwell G (eds) *Dynamics of populations*.
PUDOC, Wageningen, pp 298–312
40. Luo ZR, Mi XC, Chen XR et al (2012) Density dependence is not
very prevalent in a heterogeneous subtropical forest. *Oikos*
121:1239–1250
41. Zhang J, Hao ZQ, Sun IF et al (2009) Density dependence on tree
survival in an old-growth temperate forest in northeastern China.
Ann For Sci 66:1–9
42. Brooker RW, Maestre FT, Callaway RM et al (2008) Facilitation
in plant communities: the past, the present, and the future. *J Ecol*
96:18–34
43. McIntire EJB, Fajardo A (2014) Facilitation as a ubiquitous
driver of biodiversity. *New Phytol* 201:403–416
44. Gao C, Shi NN, Liu YX et al (2013) Host plant genus-level
diversity is the best predictor of ectomycorrhizal fungal diversity
in a Chinese subtropical forest. *Mol Ecol* 22:3403–3414
45. Hubbell SP (2001) *The unified neutral theory of biodiversity and
biogeography*. Princeton University Press, Princeton
46. Legendre P, Mi XC, Ren HB et al (2009) Partitioning beta
diversity in a subtropical broad-leaved forest of China. *Ecology*
90:663–674
47. Liu XJ, Swenson NG, Zhang JL et al (2013) The environment and
space, not phylogeny, determine trait dispersion in a subtropical
forest. *Funct Ecol* 27:264–272

48. Li BH, Hao ZQ, Bin Y et al (2012) Seed rain dynamics reveals strong dispersal limitation, different reproductive strategies and responses to climate in a temperate forest in northeast China. *J Veg Sci* 23:271–279
49. Du YJ, Mi XC, Liu XJ et al (2009) Seed dispersal phenology and dispersal syndromes in a subtropical broad-leaved forest of China. *Forest Ecol Manag* 258:1147–1152
50. Warren-Thomas E, Zou Y, Dong LJ et al (2014) Ground beetle assemblages in Beijing's new mountain forests. *Forest Ecol Manag* 334:369–376
51. Feng G, Svenning JC, Mi XC et al (2014) Anthropogenic disturbance shapes phylogenetic and functional tree community structure in a subtropical forest. *Forest Ecol Manag* 313:188–198
52. Chen L, Mi XC, Comita LS et al (2010) Community-level consequences of density dependence and habitat association in a subtropical broad-leaved forest. *Ecol Lett* 13:695–704
53. Bai XJ, Queenborough SA, Wang XG et al (2012) Effects of local biotic neighbors and habitat heterogeneity on tree and shrub seedling survival in an old-growth temperate forest. *Oecologia* 170:755–765
54. Li L, Huang ZL, Ye WH et al (2009) Spatial distributions of tree species in a subtropical forest of China. *Oikos* 118:495–502
55. Shen ZH, Fei SL, Feng JM et al (2012) Geographical patterns of community-based tree species richness in Chinese mountain forests: the effects of contemporary climate and regional history. *Ecography* 35:1134–1146
56. Wang XP, Tang ZY, Shen ZH et al (2012) Relative influence of regional species richness vs local climate on local species richness in China's forests. *Ecography* 35:1176–1184
57. Qiu YX, Fu CX, Comes HP (2011) Plant molecular phylogeography in China and adjacent regions: tracing the genetic imprints of Quaternary climate and environmental change in the world's most diverse temperate flora. *Mol Phylogenet Evol* 59:225–244
58. Feng G, Mi XC, Eiserhardt WL et al (2015) Assembly of forest communities across East Asia—insights from phylogenetic community structure and species pool scaling. *Sci Rep* 5:9337
59. Maguire DA, Forman RTT (1983) Herb cover effects on tree seedling patterns in a mature hemlock-hardwood forest. *Ecology* 64:1367–1380
60. Mölder A, Bernhardt-Römermann M, Schmidt W (2008) Herb-layer diversity in deciduous forests: raised by tree richness or beaten by beech? *Forest Ecol Manag* 256:272–281
61. Prescott CE, Grayston SJ (2013) Tree species influence on microbial communities in litter and soil: current knowledge and research needs. *Forest Ecol Manag* 309:9–27
62. Mordecai EA (2011) Pathogen impacts on plant communities: unifying theory, concepts, and empirical work. *Ecol Monogr* 81:429–441
63. Harvey CA, Medina A, Sánchez DM et al (2006) Patterns of animal diversity in different forms of tree cover in agricultural landscapes. *Ecol Appl* 16:1986–1999
64. Cesarz S, Fahrenholz N, Migge-Kleian S et al (2007) Earthworm communities in relation to tree diversity in a deciduous forest. *Eur J Soil Biol* 43:S61–S67
65. Jactel H, Brockerhoff EG (2007) Tree diversity reduces herbivory by forest insects. *Ecol Lett* 10:835–848
66. Pires MM, Galetti M, Donatti CI et al (2014) Reconstructing past ecological networks: the reconfiguration of seed–dispersal interactions after megafaunal extinction. *Oecologia* 175:1247–1256
67. Beaune D, Fruth B, Bollache L et al (2013) Doom of the elephant-dependent trees in a Congo tropical forest. *Forest Ecol Manag* 295:109–117
68. García D, Martínez D (2012) Species richness matters for the quality of ecosystem services: a test using seed dispersal by frugivorous birds. *Proc R Soc B Biol Sci* 279:3106–3113
69. Galetti M, Dirzo R (2013) Ecological and evolutionary consequences of living in a defaunated world. *Biol Conserv* 163:1–6
70. Harrison RD, Tan S, Plotkin JB et al (2013) Consequences of defaunation for a tropical tree community. *Ecol Lett* 16:687–694
71. Bello C, Galetti M, Pizo MA et al (2015) Defaunation affects carbon storage in tropical forests. *Sci Adv* 1:e1501105
72. Fellowes J, Lau M, Chan B et al (2004) Nature reserves in South China: observations on their role and problems in conserving biodiversity. In: Xie Y, Wang S, Schei P (eds) *China's protected areas*. Tsinghua University Press, Beijing, pp 341–355
73. Elvin M (2008) The retreat of the elephants: an environmental history of China. Yale University Press, New Haven
74. Galetti M, Guevara R, Côrtes MC et al (2013) Functional extinction of birds drives rapid evolutionary changes in seed size. *Science* 340:1086–1090
75. Ni J (2011) Impacts of climate change on Chinese ecosystems: key vulnerable regions and potential thresholds. *Reg Environ Change* 11:49–64
76. Zhou GY, Houlton BZ, Wang WT et al (2014) Substantial reorganization of China's tropical and subtropical forests: based on the permanent plots. *Glob Change Biol* 20:240–250
77. Enquist BJ, Enquist CAF (2011) Long-term change within a Neotropical forest: assessing differential functional and floristic responses to disturbance and drought. *Glob Change Biol* 17:1408–1424
78. Fauset S, Baker TR, Lewis SL et al (2012) Drought-induced shifts in the floristic and functional composition of tropical forests in Ghana. *Ecol Lett* 15:1120–1129
79. He HS, Hao ZQ, Mladenoff DJ et al (2005) Simulating forest ecosystem response to climate warming incorporating spatial effects in north-eastern China. *J Biogeogr* 32:2043–2056
80. Lenoir J, Svenning JC (2015) Climate-related range shifts—a global multidimensional synthesis and new research directions. *Ecography* 38:15–28
81. Liu ZH, Yang J, Chang Y et al (2012) Spatial patterns and drivers of fire occurrence and its future trend under climate change in a boreal forest of Northeast China. *Glob Change Biol* 18:2041–2056
82. de Groot WJ, Flannigan MD, Cantin AS (2013) Climate change impacts on future boreal fire regimes. *Forest Ecol Manag* 294:35–44
83. Weed AS, Ayres MP, Hicke JA (2013) Consequences of climate change for biotic disturbances in North American forests. *Ecol Monogr* 83:441–470
84. Seppälä R, Buck A, Katila P (2009) Adaptation of forests and people to climate change: a global assessment report. International Union of Forest Research Organizations, Helsinki
85. Food Agric Organ (FAO) (2010) Global forest resources assessment 2010. Rome
86. Hansen MC, Potapov PV, Moore R et al (2013) High-resolution global maps of 21st-century forest cover change. *Science* 342:850–853
87. Getzin S, Wiegand K, Schöning I (2012) Assessing biodiversity in forests using very high-resolution images and unmanned aerial vehicles. *Methods Ecol Evol* 3:397–404
88. Zahawi RA, Dandois JP, Holl KD et al (2015) Using lightweight unmanned aerial vehicles to monitor tropical forest recovery. *Biol Conserv* 186:287–295